

<h2 style="margin: 0;">15,200</h2> <p style="margin: 0;">New Jobs-City YOY Growth, Apr 2015*</p>	<h2 style="margin: 0;">20.0%</h2> <p style="margin: 0;">Air Cargo Tonnage-City YOY Growth, Apr 2015*</p>	<h2 style="margin: 0;">38.1%</h2> <p style="margin: 0;">Residential Building Permits-City YOY Growth, Apr 2015*</p>	<h2 style="margin: 0;">7.9%</h2> <p style="margin: 0;">Air Passengers-City YOY Growth, Apr 2015*</p>
--	--	---	--

Employment

YOY job growth by industry, City, Apr-2015

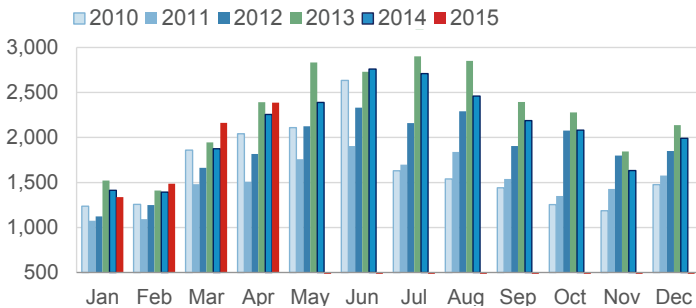
Professional & Bus. Services	3.0%	8,335
Educational & Health Services	3.1%	7,509
Government	2.1%	3,590
Retail Trade	2.1%	2,076
Transp., Whsg. & Utilities	2.2%	1,646
Construction	2.7%	727
Wholesale trade	1.2%	518
Information	1.1%	358
Natural Resources & Mining	12.8%	29
Leisure & Hospitality	-0.2%	-307
Other Services	-2.0%	-1,352
Manufacturing	-2.9%	-1,818
Financial Activities	-2.0%	-2,521

Unemployment, select cities, Apr-2015

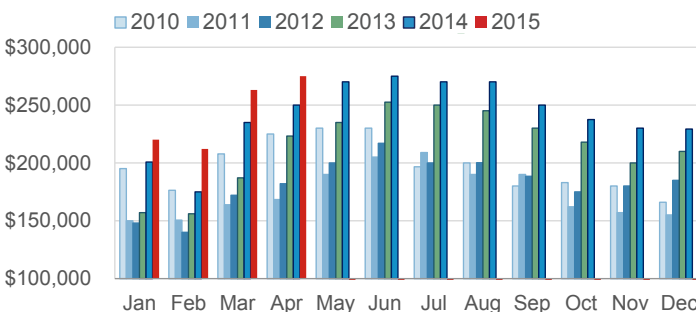
Los Angeles	7.5%	Chicago	6.5%
New York	6.1%	Houston	3.7%

Real Estate

Monthly home sales, City, Apr-2015



Median home sale price, City, Apr-2015

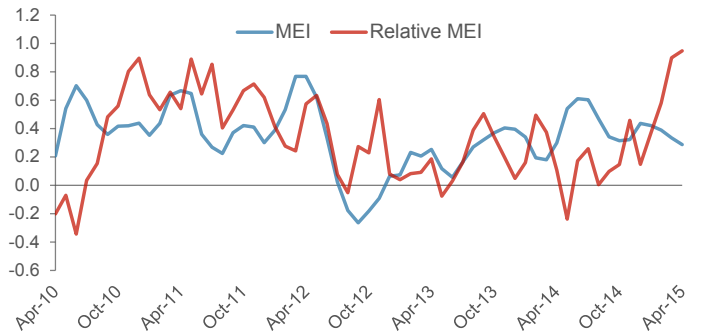


Business Activity

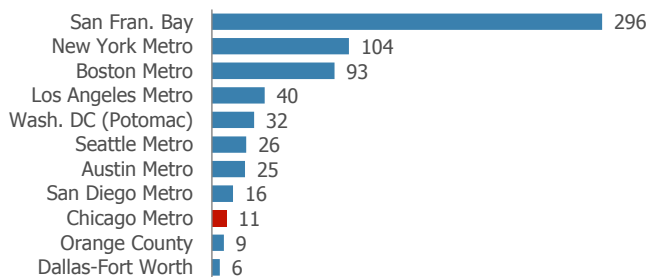
Chicago Unemployment Rate Apr-2015



Midwest Economy Index, Apr-2015

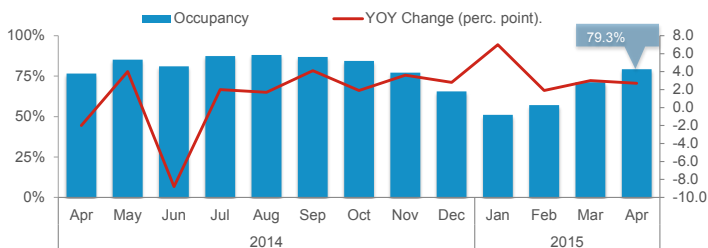


Investment deals with VC-backed co's, Q1 2015



Tourism

Average Occupancy, Chicago hotels, 2014-2015



Indicator	Date	Month/Quarter				
		Most Recent	Year Earlier	Yr-On-Yr Chg		
Employed residents (1,000)-City	Apr-15	1,268.7	1,250.0	1.5%		
Employed residents (1,000)-MSA	Apr-15	4,567.4	4,512.3	1.2%		
Labor force (1,000)-City	Apr-15	1,357.0	1,354.1	0.2%		
Labor force (1,000)-MSA	Apr-15	4,846.3	4,852.3	-0.1%		
Unemployment rate-City	Apr-15	6.5	7.7	-1.2		
Unemployment rate-MSA	Apr-15	5.8	7.0	-1.3		
Labor force participation rate-statewide	Apr-15	64.5	65.1	-0.6		
Total private payroll jobs (1,000)-City	Apr-15	1,202.7	1,187.5	1.3%		
EMPLOYMENT	Educational & Health Services	Apr-15	248.3	240.8	3.1%	
	Professional & Bus. Services	Apr-15	285.8	277.5	3.0%	
	Retail Trade	Apr-15	99.6	97.5	2.1%	
	Government	Apr-15	178.3	174.7	2.1%	
	Transportation, Warehousing, & Utilities	Apr-15	74.9	73.3	2.2%	
	Leisure & Hospitality	Apr-15	134.4	134.7	-0.2	
	Information	Apr-15	33.9	33.5	1.1%	
	Construction	Apr-15	27.2	26.5	2.7%	
	Natural Resources & Mining	Apr-15	0.3	0.2	12.8%	
	Other Services	Apr-15	65.6	67.0	-2.0%	
	Wholesale trade	Apr-15	45.3	44.8	1.2%	
	Financial Activities	Apr-15	125.4	127.9	-2.0%	
	Manufacturing	Apr-15	61.9	63.7	-2.9%	
	Unemployment insurance claims-Cook County	May-15	14,200	16,779	-15.4%	
	New hires (1,000, seas. adjusted)-Midwest	Apr-15	1,209	1,164	3.9%	
	Online job postings-Cook County	Q1-2015	178,219	N/A*	N/A*	
	BUSINESS ACTIVITY	Leading Economic Index (2004=100)-Nt'l	Apr-15	122.3	N/A**	N/A**
		Consumer Sentiment Index-Nt'l	Jun-15	94.6	82.5	12.1
		Consumer Confidence (1985=100)-Nt'l	May-15	95.4	83.0	12.4
		Architecture Billings Index-Nt'l	Apr-15	48.8	49.6	-0.8
Producer Price Index (1982=100, seas. adjusted)-Nt'l		May-15	195.2	201.1	-5.9	
New automobile sales (thousands)-Nt'l		May-15	561.1	563.6	-0.4%	
New truck sales (thousands)-Nt'l		May-15	733.4	706.4	3.8%	
Freight Transportation Services Index (2000=100)-Nt'l		Apr-15	120.4	120.0	0.4	
Midwest Economy Index-Midwest		Apr-15	0.29	0.30	-0.01	
Exports (\$B)-State of Illinois		Apr-15 YTD	21.2	22.9	-7.5%	
GRP (est., 2014 \$B)-MSA	2013	575.5	561.0	2.6%		

(cont.)

Green = Improving; Red = Worsening

Chicago by the Numbers

Revised June 16, 2015

Indicator	Date	Month/Quarter			
		Most Recent	Year Earlier	Yr-On-Yr Chg	
BUSINESS ACTIVITY	Chicago Business Barometer (seas. adjusted)-MSA	May-15	46.2	65.5	-19.3
	Consumer Price Index (CPI-U; 1982-84=100)-MSA	Apr-15	227.7	229.8	-2.1
	Air cargo tonnage-ORD+MDW	Apr-15	148,387	123,686	20.0%
	Venture capital rounds-MSA	Q1 2015	11	13	-15.4%
	Venture capital investment (\$M)-MSA	Q1 2015	104.8	112.5	-6.9%
	Major business expansions-City	Jun-15 YTD	82	N/A	N/A
	Major business expansions-MSA	Jun-15 YTD	182	N/A	N/A
	Digital startup funding (\$M)-MSA	2014	1,585	1,053	50.5%
	Active manufacturing licenses-City	Jun-15	970	986	-1.6%
REAL ESTATE	Population (millions)-City	Jul-14	2.722	2.722	0.003%
	Population (millions)-MSA	Jul-14	9.555	9.545	0.1%
	Cost of Living Index-City	Q1 2015	114.6	117.5	-2.9
	Case Shiller Home Price Index-MSA	Mar-15	127.8	123.6	4.2
	New private residential building permits (units)-City	Apr-15 YTD	2,635	1,908	38.1%
	New private residential building permits (units)-MSA	Apr-15 YTD	4,877	4,488	8.7%
	Housing starts (1,000)-Midwest	Apr-15	170	190	-10.5%
	Home sales-City	Apr-15	2,386	2,256	5.8%
	Median home sale price (\$)-City	Apr-15	275,000	250,000	10.0%
TOURISM	Office vacancy rate-downtown	Q1 2015	12.7	13.7	-1.0
	Office vacancy rate-suburbs	Q1 2015	19.1	19.8	-0.7
	Annual visitors (millions)-City	2014	50.17	48.48	3.5%
	Hotel occupancy rate-City	Apr-15	79.3	76.6	2.7
	Hotel average daily rate (\$)-City	Apr-15	200.47	174.62	14.8%
Air passengers (millions)-ORD+MDW	Apr-15	8.12	7.53	7.9%	

Green = Improving; Red = Worsening

Footnotes and Sourcing

*Data provider is continually improving its collection method, so growth is not directly attributable to an increase in labor demand

**2015 data incorporates annual benchmark revisions to the composite economic indexes. As a result, revised indexes are not be directly comparable to prior years.

Data is current as of 06/15/2015; preliminary estimates are subject to revision. Data is not adjusted for seasonality unless noted. The Chicago metropolitan statistical area (MSA) consists of a 14-county, tri-state region: Cook, DeKalb, DuPage, Grundy, Kane, Kendall, Lake, McHenry, and Will counties in Illinois; Jasper, Lake, Newton, and Porter counties in Indiana; and Kenosha County in Wisconsin. Midwest data reflects totals for Illinois, Indiana, Iowa, Kansas, Michigan, Minnesota, Missouri, Nebraska, North Dakota, Ohio, South Dakota, and Wisconsin. The Freight Transportation Services Index is a measure of the month-to-month changes in the output of for-hire freight transportation service providers including trucking, rail, inland waterway vessels, pipeline, and air freighters; the index does not include international or coastal movements, private trucking, courier services, or the U.S. Postal Service. State of Illinois exports are measured by the U.S. Census Harmonized System (HS) origin of production state-based series. Venture capital refers to cash investments by corporations and individuals into companies that have received at least one round of venture funding.

Sources (in order of reference): Illinois Department of Employment Security, U.S. Bureau of Labor Statistics, Chicago-Cook Workforce Partnership analysis of Burning Glass data, The Conference Board, Thomson Reuters/University of Michigan, American Institute of Architects, U.S. Bureau of Economic Analysis, U.S. Bureau of Transportation Statistics, Federal Reserve Bank of Chicago, USA Trade Online, EMSI, Institute for Supply Management, Chicago Department of Aviation, DJX VentureSource, World Business Chicago, Built in Chicago, City of Chicago, U.S. Census Bureau, Council for Community and Economic Research, S&P Dow Jones, Illinois Association of Realtors, CBRE, Choose Chicago analysis of Smith Travel Research data